

RESPECTONS LES TAILLES

CNPPM



CONFÉDÉRATION NATIONALE
DE LA PLAISANCE
ET DE LA PÊCHE EN MER



Sardine (*Sardina pilchardus*) 11 cm



Hareng (*Clupea harengus*) 20 cm



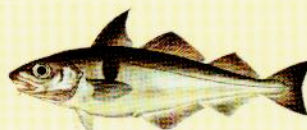
Alose finte (*Alosa fallax*)



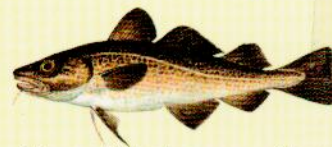
Anchois (*Engraulis encrasicolus*) 12 cm



Merlan (*Gadus merlangus*) 27 cm



Eglefin (*Gadus aeglefinus*) 30 cm



Morue cabillaud (*Gadus morhua*) 35 cm



Lieu jaune (*Pollachius pollachius*) 30 cm



Lieu noir (*Pollachius virens*) 35 cm



Dorade rose
(*Pagellus erythrinus*, *Pagellus bogaraveo*) 25 cm



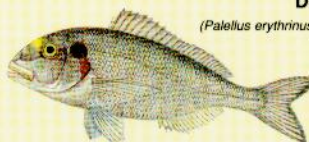
Merlu (*Merluccius merluccius*) 27/30 cm



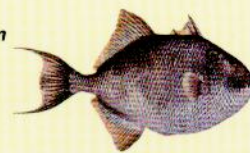
Sar (*Diplodus sargus*) 23 cm



Dorade grise (*Spondyliosoma cantharus*) 23 cm



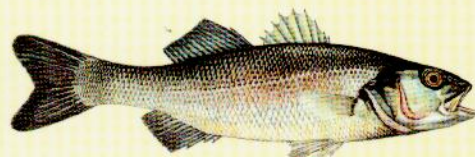
Dorade royale (*Pagrus aurata*) 19 cm



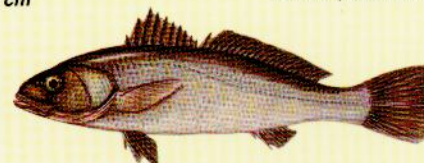
Baliste (*Balistes carolinensis*)



Bar moucheté (*Dicentrarchus punctatus*) 30 cm



Bar (*Dicentrarchus labrax*) 36 cm



Maigre (*Argyrosomus regius*) 45 cm



Mulet muge (*Mugil cephalus/Chelon labrosus*) 20 cm



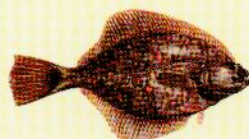
Chinchard (*Trachurus trachurus*)



Maquereau (*Scomber scombrus*) 20/30 cm



Tacaud (*Trisopterus luscus*)



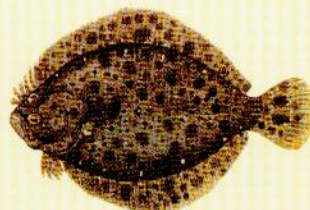
Flet (*Pleuronectes flesus*) 25 cm



Plie carrelet (*Pleuronectes platessa*) 25 cm



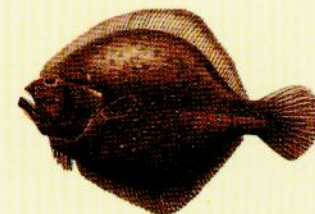
Limande (*Limanda limanda*) 15/23 cm



Barbue (*Scophthalmus rhombus*) 30 cm



Sole commune (*Solea solea*) 24 cm



Turbot (*Psetta maxima*) 30 cm



Limande sole (*Microstomus kitt*) 25 cm



Rouget barbet (*Mullus surmuletus*) 15 cm



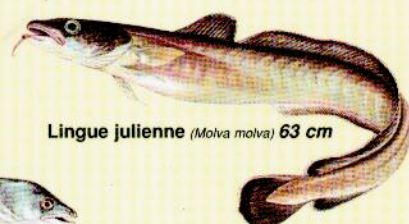
Rouget grondin (*Trigla gurnardus*)



Roussette (petite) (*Scyliorhinus canicula*)



Congre (*Conger conger*) 58 cm



Lingue julienne (*Molva molva*) 63 cm



Orpie (*Belone belone*) 30 cm



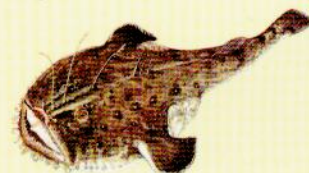
Saint Pierre (*Zeus faber*)



Vieille (*Labrus bergylla*)



Vive (grande) (*Trachinus draco*)



Baudroie lotte (*Lophius piscatorius*)

Attention, certaines réglementations locales peuvent être différentes, se renseigner auprès des AFFAIRES MARITIMES du Quartier maritime concerné.
Cette planche est valable pour le littoral Atlantique, la Manche et la Mer du Nord.

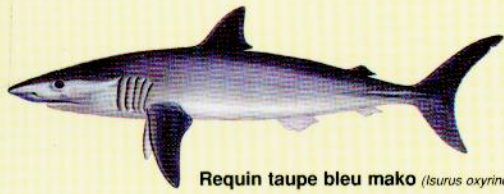
RESPECTONS LES TAILLES

www.fnppsf.fr - www.ffpm.org

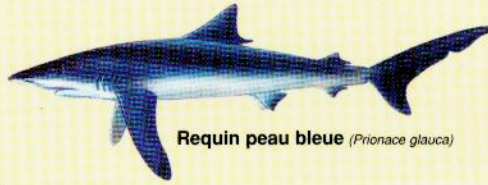
CNPPM



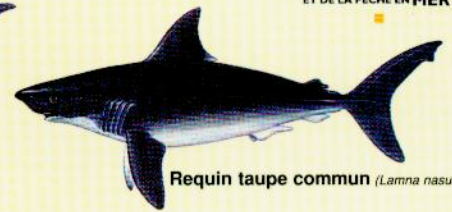
CONFÉDÉRATION NATIONALE
DE LA PLAISANCE
ET DE LA PÊCHE EN MER



Requin taupe bleu mako (*Isurus oxyrinchus*)



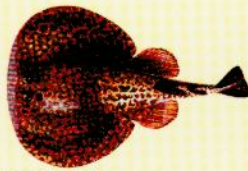
Requin peau bleue (*Prionace glauca*)



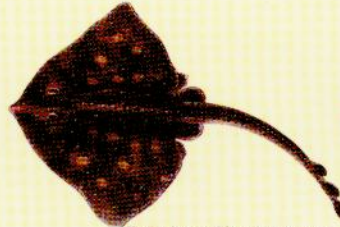
Requin taupe commun (*Lamna nasus*)



Requin renard (*Alopias vulpinus*)



Raie torpille (*Torpedo marmorata*)



Raie bouclée (*Raja clavata*)



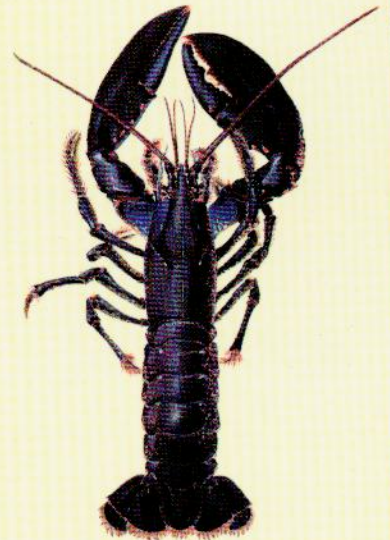
Raie pastenague (*Dasyatis pastinaca*)



Araignée (*Maja squinado*) 12 cm



Tourteau (*Cancer pagurus*) 13/14 cm



Homard (*Homarus gammarus*) 8,7 cm



Crevette bouquet (*Palaemon serratus*) 3 cm



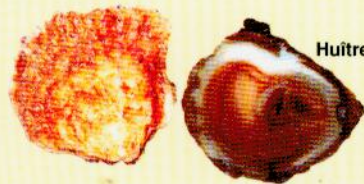
Etrille (*Necora puber*) 5 cm



Pouce-pied (*Pollicipes cornucopia*)



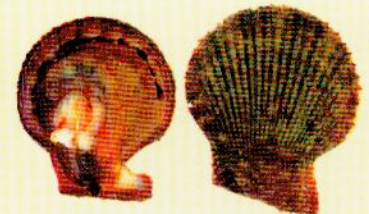
Huître creuse (*Crassostrea gigas*) 30 grs



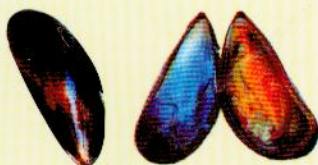
Huître plate (*Ostrea edulis*) 5 cm



Ormeau (*Haliotis tuberculata*) 8/9 cm



Pétoncle noir (*Chlamys varia*) 3,5 cm



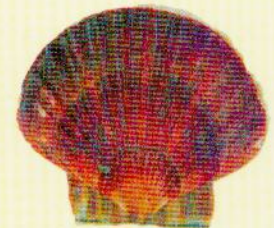
Moule (*Mytilus edulis*) 4 cm



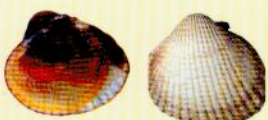
Bulot (*Buccinum undatum*) 4,5 cm



Bigorneau (*Littorina littorea*)



St Jacques Atlantique (*Pecten maximus*) 10/11 cm



Coque (*Cerastoderma edule*) 3 cm



Palourde d'Europe (*Ruditapes decussatus*) 4 cm



Amande de mer (*Glycymeris glycymeris*)



Praire (*Venus verrucosa*) 4 cm

Attention, certaines réglementations locales peuvent être différentes, se renseigner auprès des AFFAIRES MARITIMES du Quartier maritime concerné.
Cette planche est valable pour le littoral Atlantique, la Manche et la Mer du Nord.